



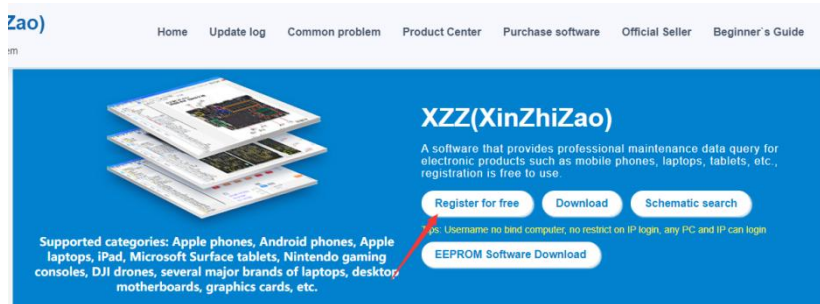
# Manual for PC

1. Register .....	- 1 -
2. Login .....	- 4 -
3. Interface introduction .....	- 5 -
3.1 Members Center .....	- 5 -
3.2 Catalogue introduction .....	- 5 -
4. Search function .....	- 7 -
4.1 File Search .....	- 8 -
5. Use XinZhiZao .....	- 9 -
5.1 PDF Reader .....	- 9 -
5.2 PCB BoardViewer .....	- 9 -
5.2.1 Highlighting components .....	- 9 -
5.2.2 Colour setting .....	- 10 -
5.2.3 Mirror function .....	- 11 -
5.2.4 Diode value .....	- 11 -
5.2.5 Lookup function .....	- 11 -
5.2.6 File interchange .....	- 12 -
5.2.7 Double display .....	- 13 -
5.3 PCB Layer .....	- 14 -
5.4 Favorites .....	- 15 -
5.5 Marking function .....	- 15 -
5.6 View all connection NET function .....	- 18 -
6. Three users account .....	- 18 -
7. Q&A .....	- 21 -

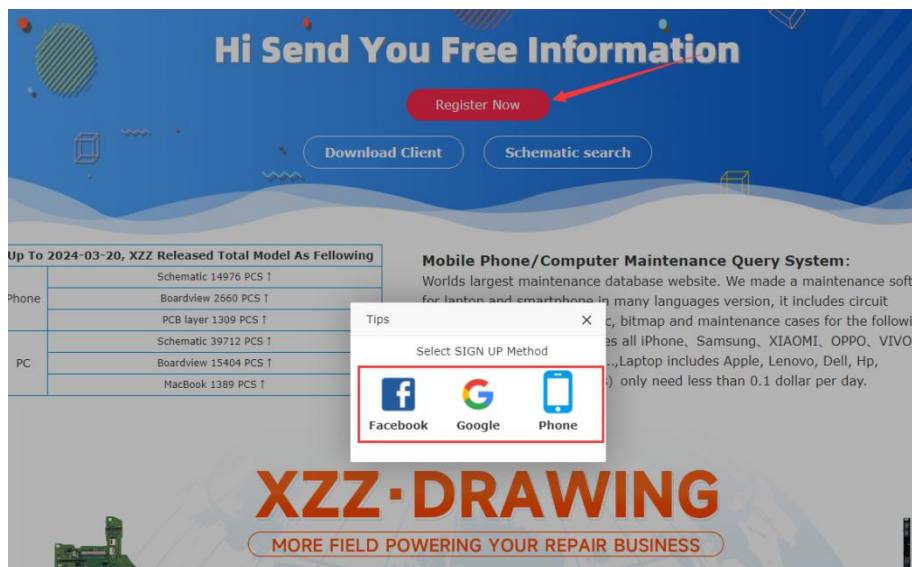


## 1. Register

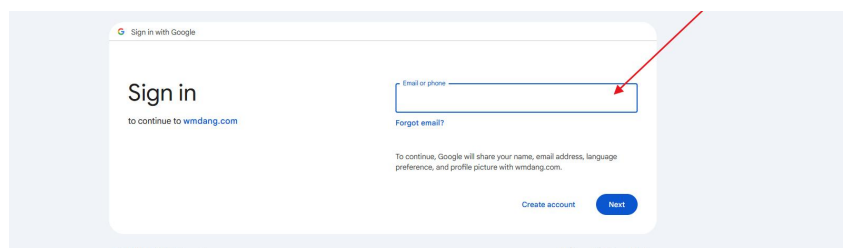
1、Open the official website of XinZhiZao: <https://global.wmdang.com/>, Click on the free registration button on the homepage.



2、After entering the registration page, click register now and a selection box will pop up, allowing you to choose Facebook registration, Google registration, or phone number registration.



3、Choose one of the registration methods, such as Google registration, and you will enter the Google email login authorization page. Enter your Google email and password to authorize login. If you have already registered with XinZhiZao using Google email, the authorization will be automatically linked to your XinZhiZao account after completion.





4、 After completing Google authorization login, you also need to enter the desired XinZhiZao username and password. After verification, you can complete the registration. After downloading the software, use your Google account to log in to XinZhiZao.

XinZhiZao  
XinZhiZao maintenance inquiry system

Go back to home

Google Authorise XinZhiZao

Username: xinzhaio502

Email: xzhizao@gmail.com

Password: •••••

Age: 32y

Register and Bind

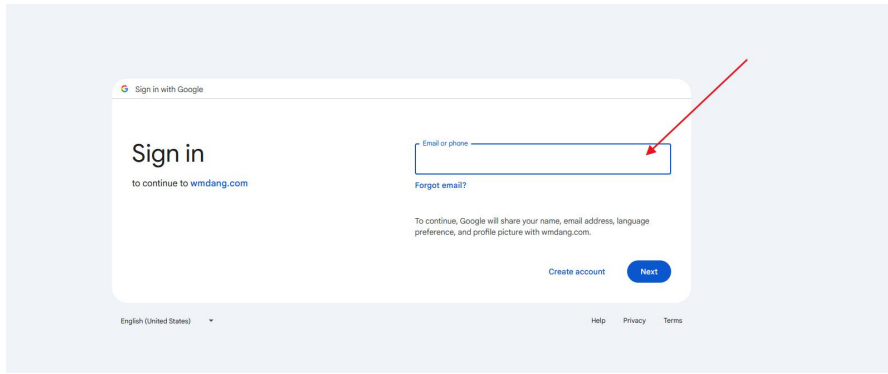
©2024 XZZ(xinZhiZao)

5、 If you have downloaded the XinZhiZao software and used the shortcut on the software page to log in, such as a Google account.




Software initialization has been completed, please log in!




6、 After clicking on Google, you will enter the Google login authorization page based on your default browser. Enter your Google account password to authorize login. After successful authorization login, you will enter the binding page.



7、 If you already have a XinZhiZao account, please choose to bind the account, enter the existing XinZhiZao account and password, and then bind the Google account.


 **XinZhiZao**  
XinZhiZao maintenance inquiry system

Go back to home

Please choose to bind to the XZZ(XinZhiZao) account if you have, if not, please choose to register.


☒ Bind to account ☐ Register account






Login and Bind

©2024 XZZ(XinZhiZao)

8、 If you do not have a XinZhiZao account, please choose to register an account and enter your username and password to register and bind the account.

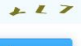
 **XinZhiZao**  
XinZhiZao maintenance inquiry system

Go back to home

Please choose to bind to the XZZ(XinZhiZao) account if you have, if not, please choose to register.

☐ Bind to account ☒ Register account

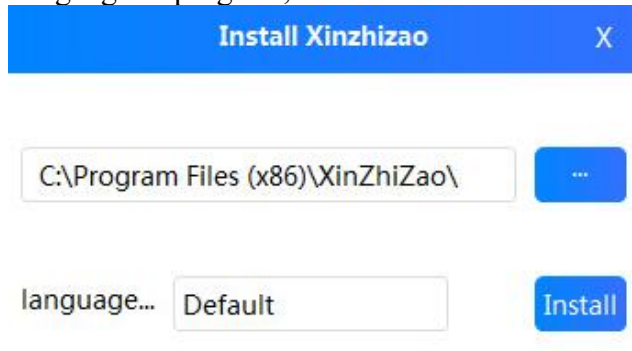


Register and Bind



## 2. Login

① After downloading the installer, you can click the "Default" to set the language of program;



② Click "Install" button, you can login with Google account, Facebook account, username or registration Email;







## XinZhiZao

V4.3

Inquiry System for Intelligent Terminal  
Equipment Maintenance

[Quick login here](#)

☐ Save password [Recover?](#)

Login

Software initialization has been completed, please log in!

## 3. Interface introduction

### 3.1 Members Center

In Member Center, there are "VIP expiry date", "Withdrawal of cash", "Activation code", "Charge VIP", "Recharge log", "Sub account", "Provide information to receive the reward", "Help", "Reset password", "Modify Email" and "Sharing software".

Reset password

Social Account

Modify Email

[View VIP permissions in the mobile and computer areas](#) [View Customized VIP Time](#)

[Activation code](#) | [Charge VIP](#) | [Sub account](#) | [Get reward](#) | [Beginner's Guide](#)

[Withdrawal of cash](#) | [NEWS](#) | [LEE\\*\\*\\*ENO](#) | [Get rewards](#) 13.17USD | [I'd like to promote](#) | [Marking manage/collect](#)

[profile.php?id=100080963861386](#) | [WhatsApp: +86 18823306625](#) | All employees of Xinzhi Manufacturing wish everyone good health, smooth career, and happy family

Mobile phone, Computer VIP

Drone VIP

Game Console VIP

Car VIP

1 month VIP

\$ 6 /1month

\$0.2/day

Purchase VIP

3 month VIP

\$ 15 /3month

\$0.2/day

Purchase VIP

1 user

First buy price \$ 43.9 /yr

Renewal price \$ 43.9 /yr

\$0.1/day

Purchase VIP

3 users

First buy price \$ 69 /yr

Renewal price \$ 69 /yr

\$0.1/day

Purchase VIP

Lifetime VIP 1 user

\$ 199 /Lifetime

Purchase VIP

Free to Get VIP

Sharing software

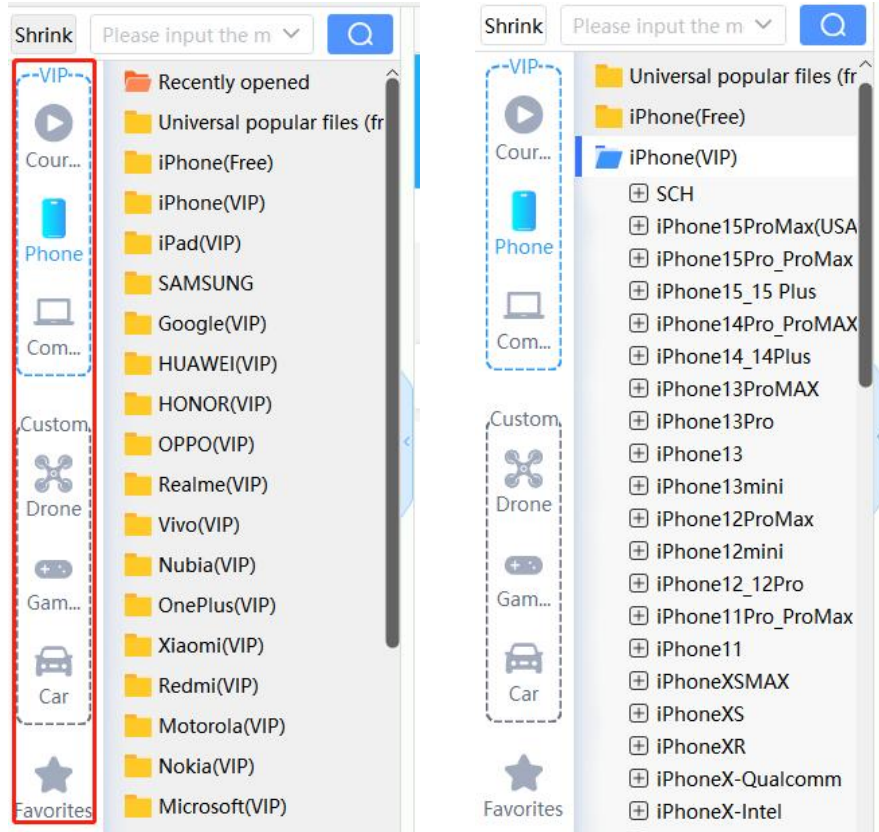
### 3.2 Catalogue introduction

In Catalogue, there are "Phone/Tablet", "Laptop", "PC", "Graphics", "LCD/TV", "Customize", "Favorites". **Please be noted the "Customize" section should be paid separately.**

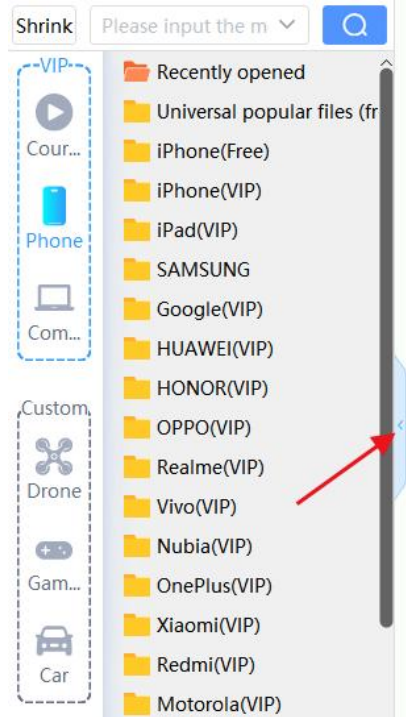




Folders with a "+" in front of them, means they have a next level directory or file, folders without a "+" in front of them, means they do not have a next level directory. Ordinary folders are free to use forever, folders with VIP require VIP membership(see below). Bitmaps are in pcb/fz/brd etc format, schematics are in pdf format.



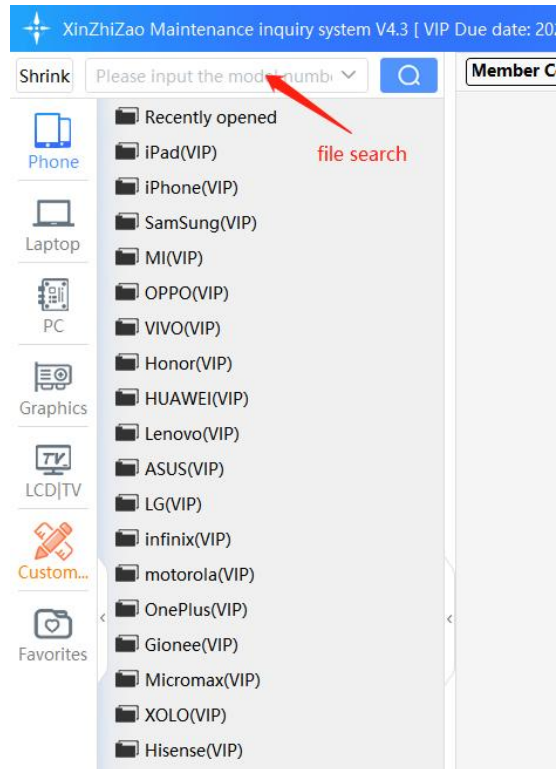
The directory has a folding function.





## 4. Search function

The search function means file search.







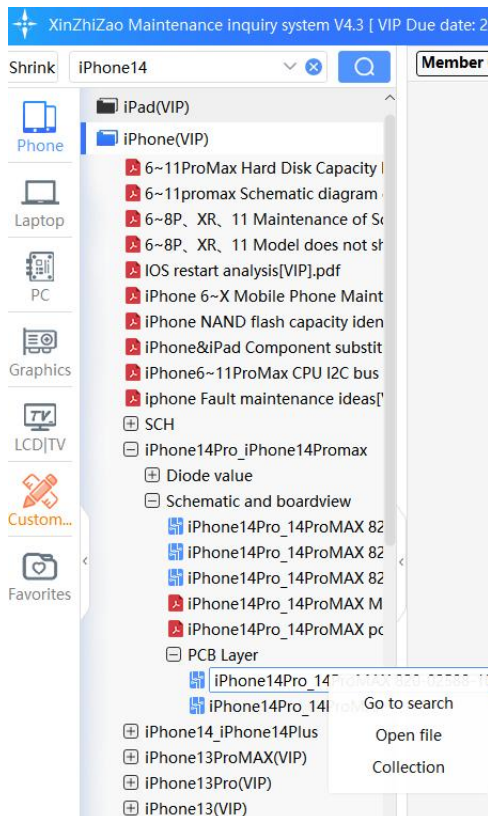
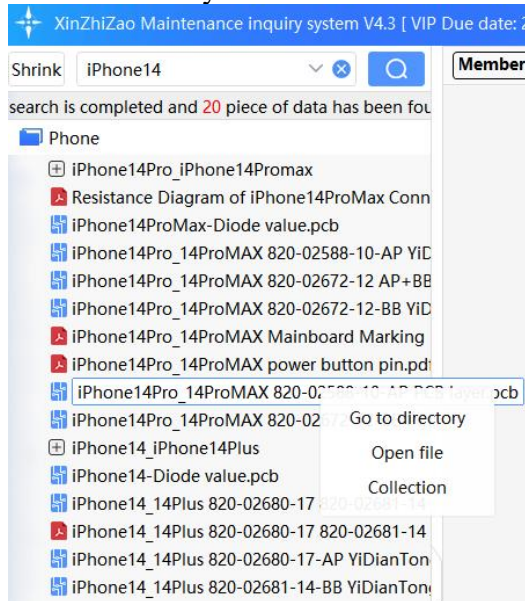
## 4.1 File Search

File search supports fuzzy query, enter keywords, click "search" button, all matching files will be listed, right click on a file to view "Go to directory", "Open file", "Collection";

After opening the directory where the file is located, right-clicking can also switch back to the search function;

The search box has its own search memory function, and the keywords of the searched content can be recorded and displayed;

Clicking "Reset" button will return to the state before the search and clear the search history.



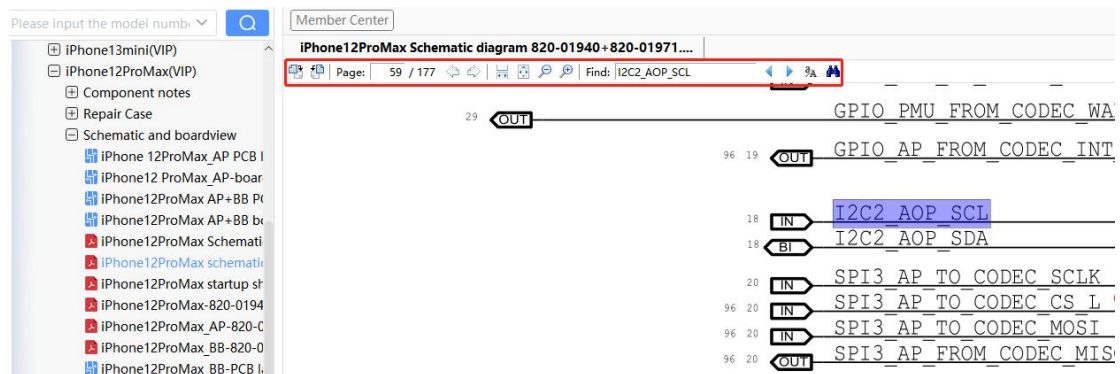


## 5. Use XinZhiZao

### 5.1 PDF Reader

The PDF Reader contains buttons in order: Turn Right, Turn Left, Page Number, Previous Page, Next Page, Fit Page, Zoom Out, Zoom In, Find, Find Previous, Find Next, Match Case, Find All.

Note: Roll the mouse wheel to quickly zoom the PDF, hold to drag the page. Double-click the signal name to automatically copy and paste it to the Find Box.



### 5.2 PCB BoardViewer

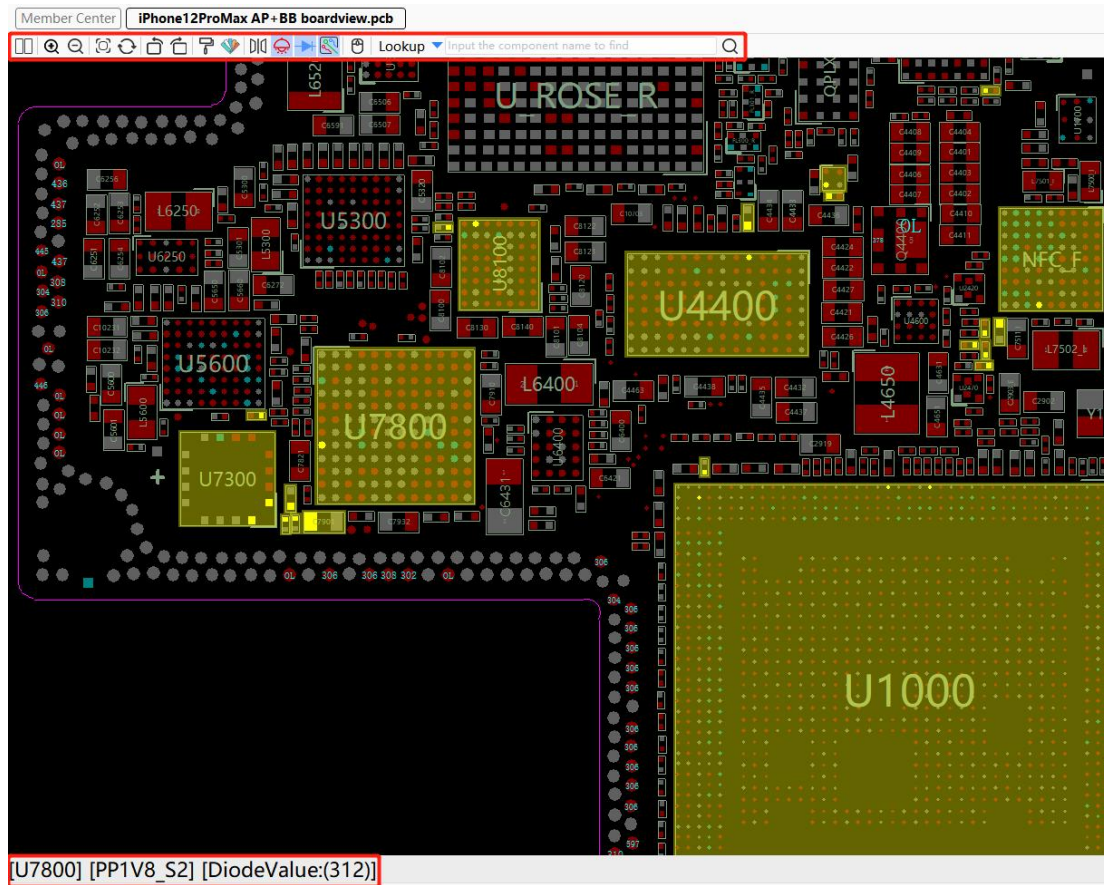
In the BoardViewer, you can press and hold the left and right mouse button to drag the BoardViewer, use the scroll wheel to zoom, and when the mouse stays on the component pin, the detailed information of the current pin will be displayed.

In BoardViewer mode, the toolbar buttons are as shown in the figure, and several main functions are introduced below.



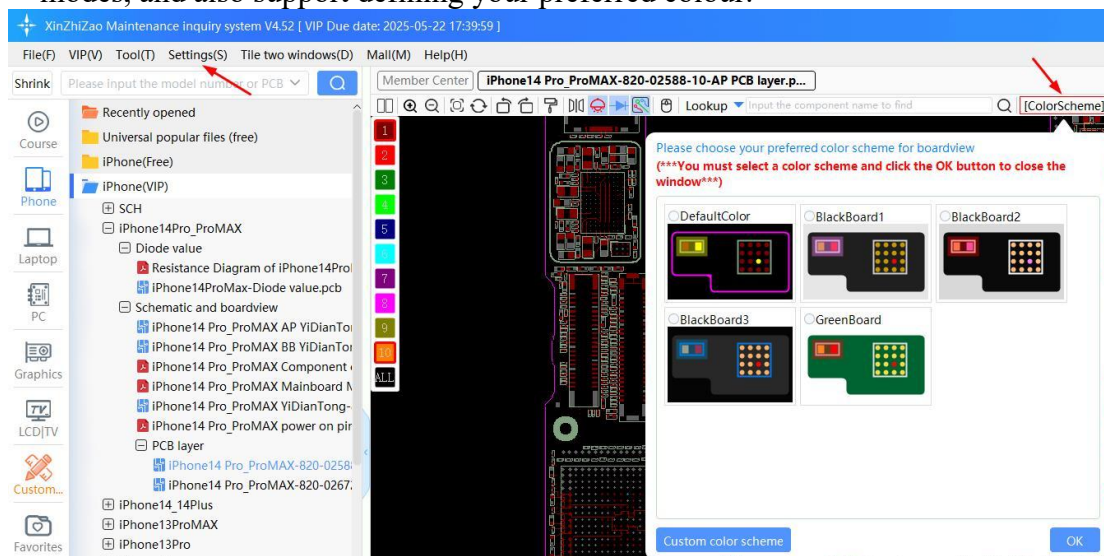
#### 5.2.1 Highlighting components

When the component pin is clicked, the component pins with the same signal will be highlighted and the component is also highlighted (this function can be switched on/off with the "🔍" button, the default is switched on), red colour pin means the signal or power supply, when it is selected, all components connected to this pin will be highlighted and the bottom shows the diode value, voltage of this pin at the same time.



## 5.2.2 Colour setting

The boardview background colour can be set by “Settings” menu, and can also by “Colour Scheme” button. The default mode is red and black, with 5 option modes, and also support defining your preferred colour.

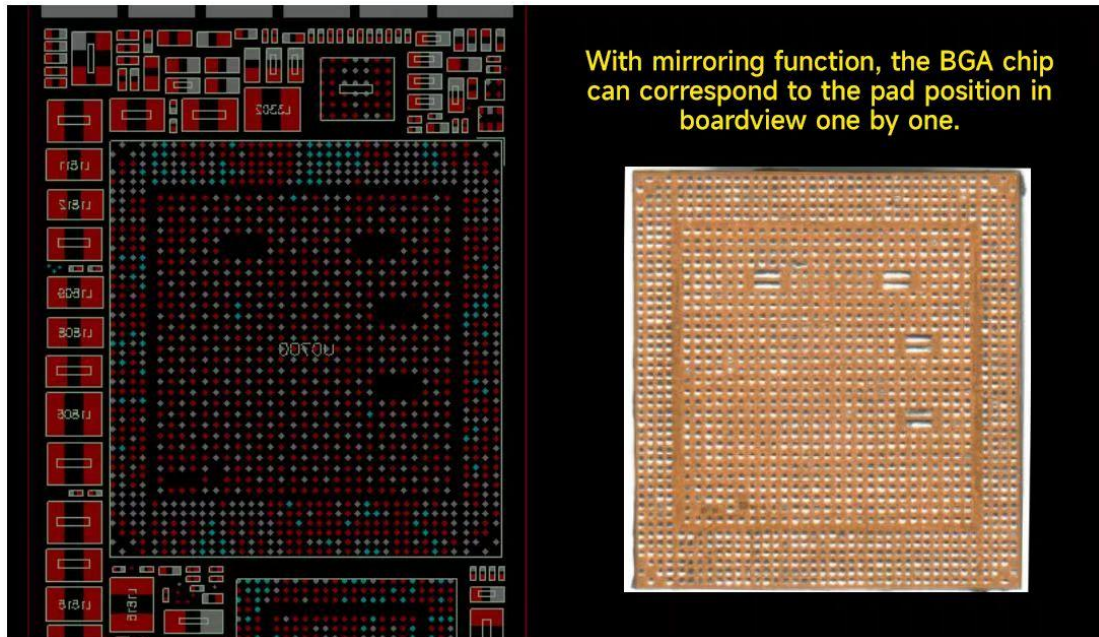






### 5.2.3 Mirror function

The mirroring function is mainly used for advanced maintenance, to facilitate the measurement of whether the BGA chip is damaged or not. When clicking on the "D|D" mirror, the BGA chip is turned over horizontally and the corresponding pin diode values can be measured against one another to determine if the chip is damaged.



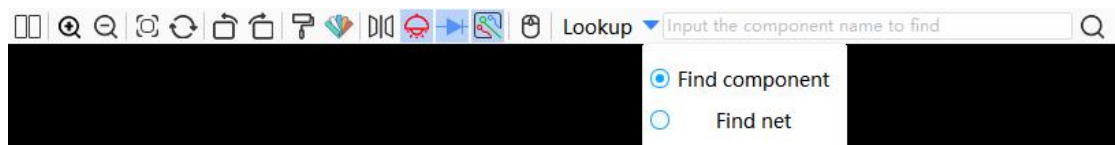
### 5.2.4 Diode value

Clicking on the "D|D" button toggles the display or hiding of the diode value, when the BoardViewer is opened, the diode value is displayed by default.



### 5.2.5 Lookup function

Click the triangle "▼" next to the "Lookup" button to toggle the lookup between components and signals in the BoardViewer, fuzzy lookup also is supported.

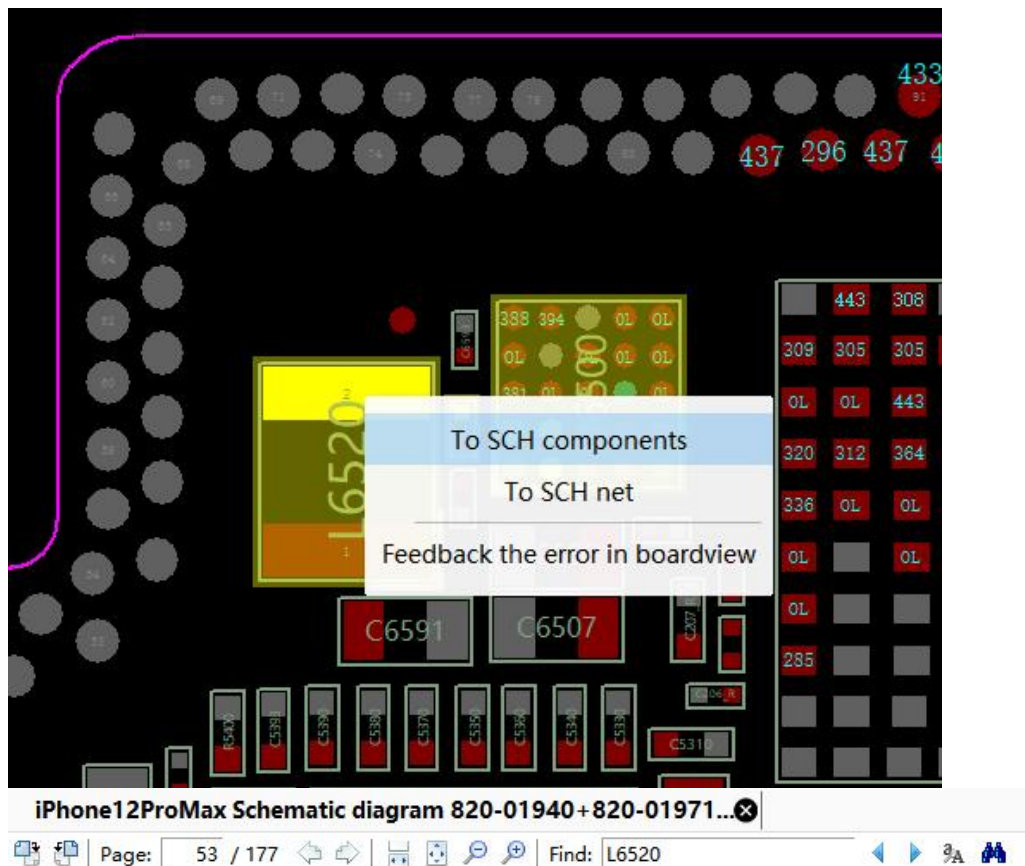




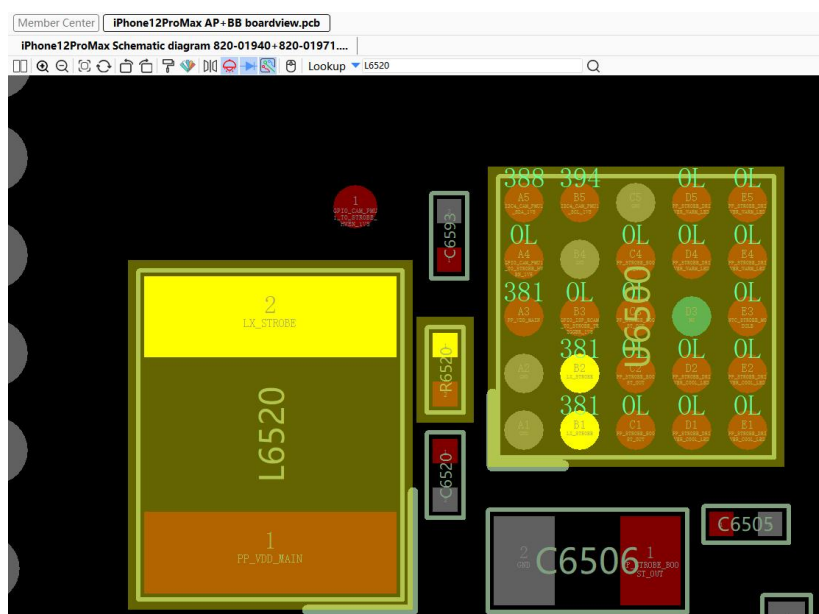
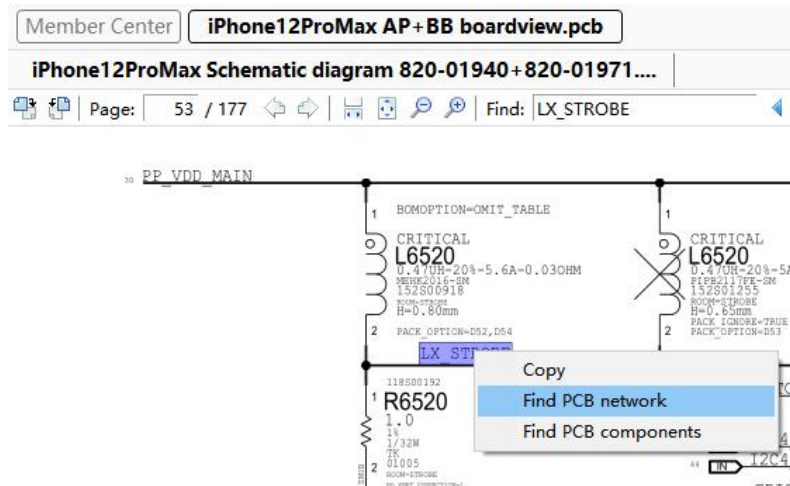
## 5.2.6 File interchange

BoardViewer jump to schematic, schematic jump to BoardViewer.

BoardViewer jump to schematic: Making sure both BoardViewer and schematic are open, left click the component pin to be queried in the BoardViewer, then click the right button to jump to the component or signal in the schematic, the program will automatically jump to the corresponding location in the schematic. (In some cases, the schematic needs to be used in conjunction with the "Find Next")



Schematic jump to BoardViewer: Double click the component position number or signal name, then click right mouse, there will be options, click the corresponding option to automatically jump to the corresponding position in the BoardViewer.




## 5.2.7 Double display

Click on the " " button, double display function will be turned on. (Need to open both the schematic and the BoardViewer to enable this function)

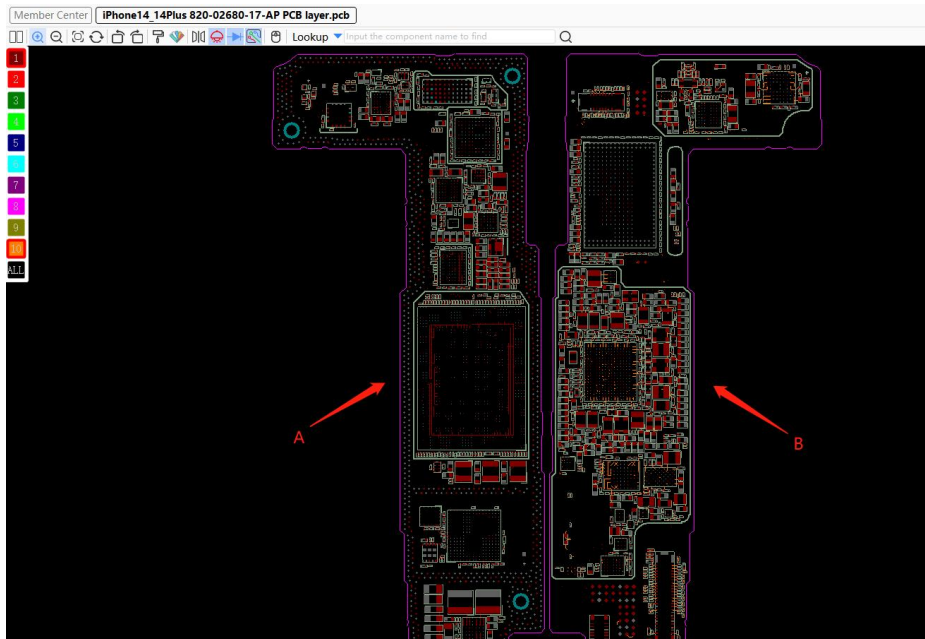




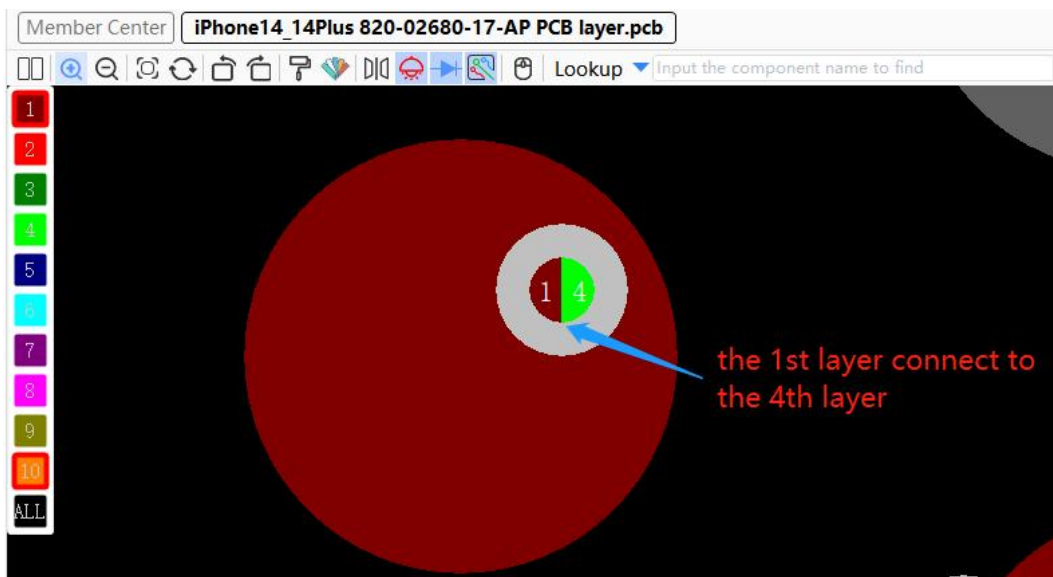
### 5.3 PCB Layer

Click on the "  " wire button to show or hide the copper skin wire function, the default is to show.

After opening the BoardViewer file, you can see A, 2, 3, 4, 5, 6, 7, 8, 9, B, ALL layer, both of the layer can be clicked to display the copper skin wire of the corresponding PCB layer as required. The number of layers is counted from the left side.



The number in the wire indicates that the \*th layer connect to the \*th layer.

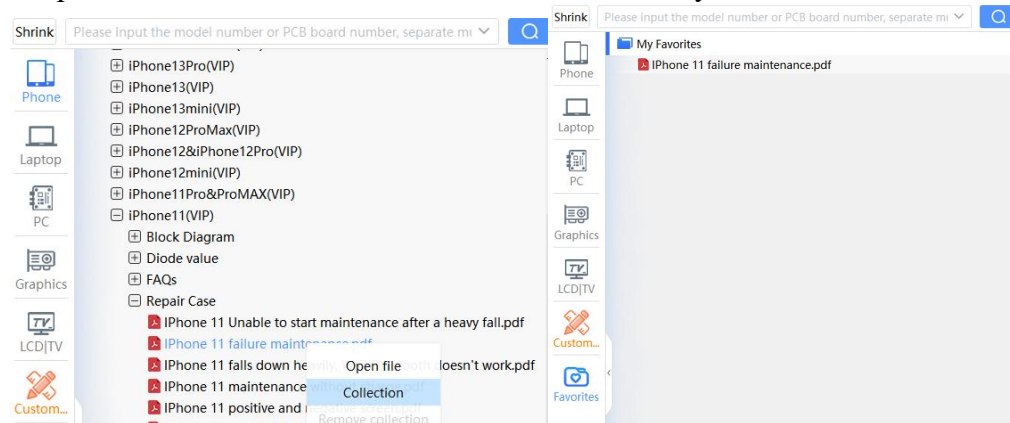






## 5.4 Favorites

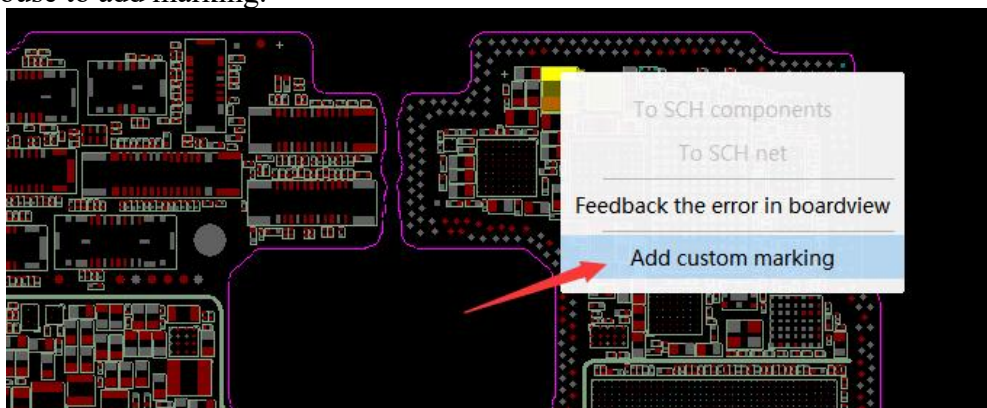
Right-click on the file that needs to be opened frequently, add it to favorites, and then open it in the favorites at the bottom of the directory.



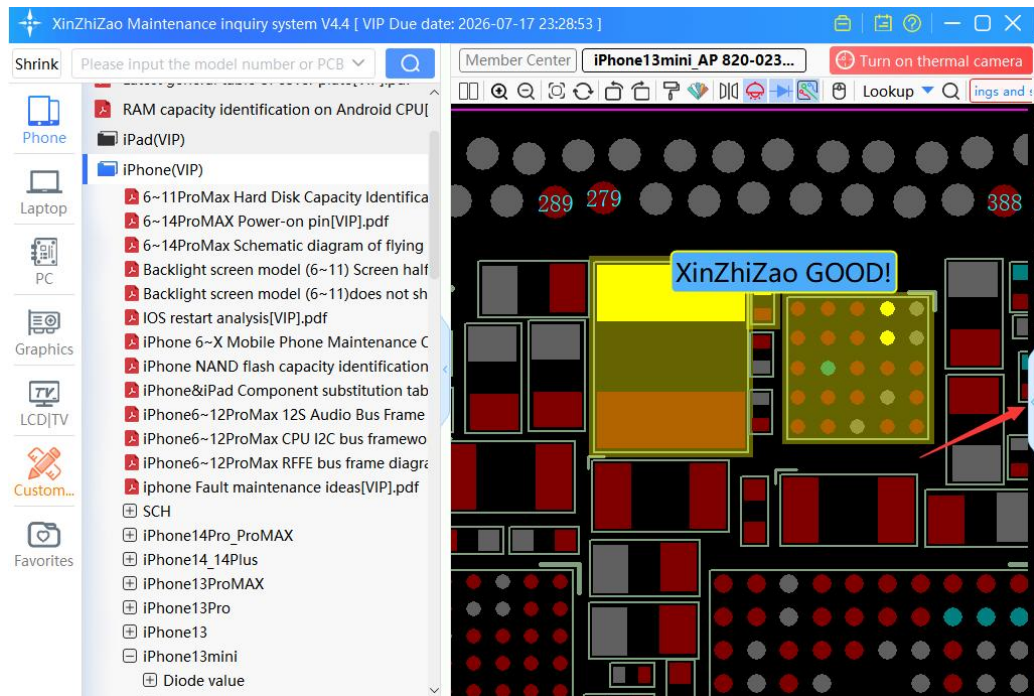
## 5.5 Marking function

XinZhiZao supports maintenance marking function, free marking, stored in Cloud, flexible sharing and will never be lost.

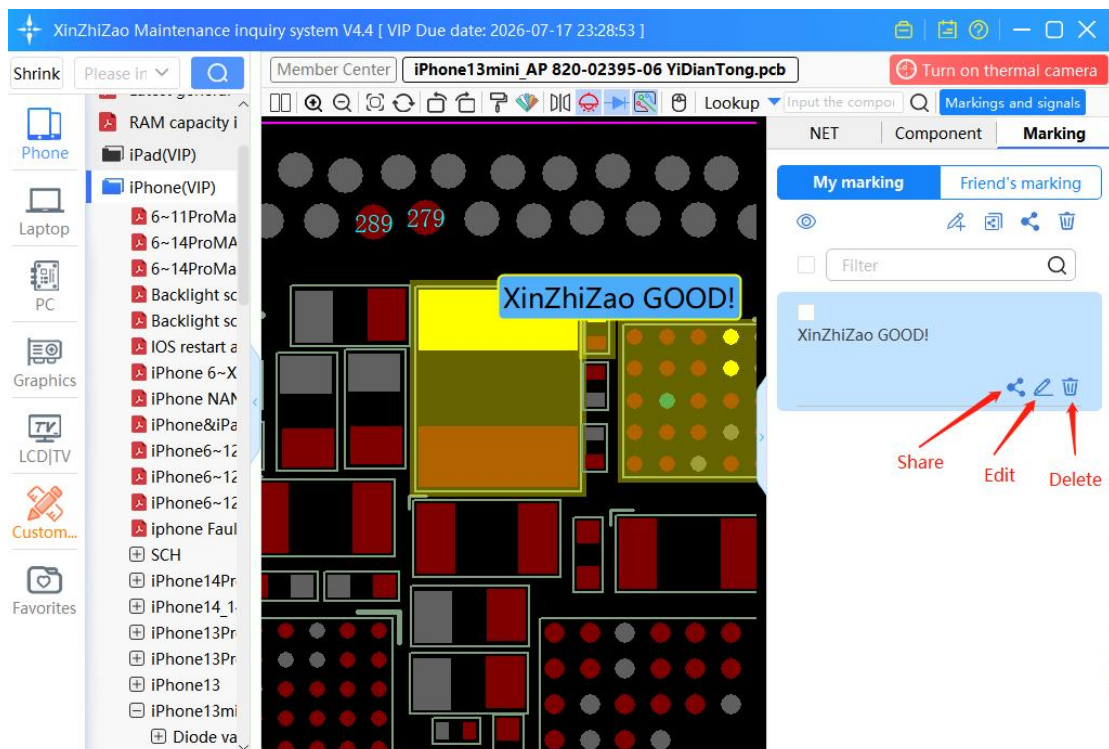
As shown in the picture, when opening the PCB format file, right click the mouse to add marking.



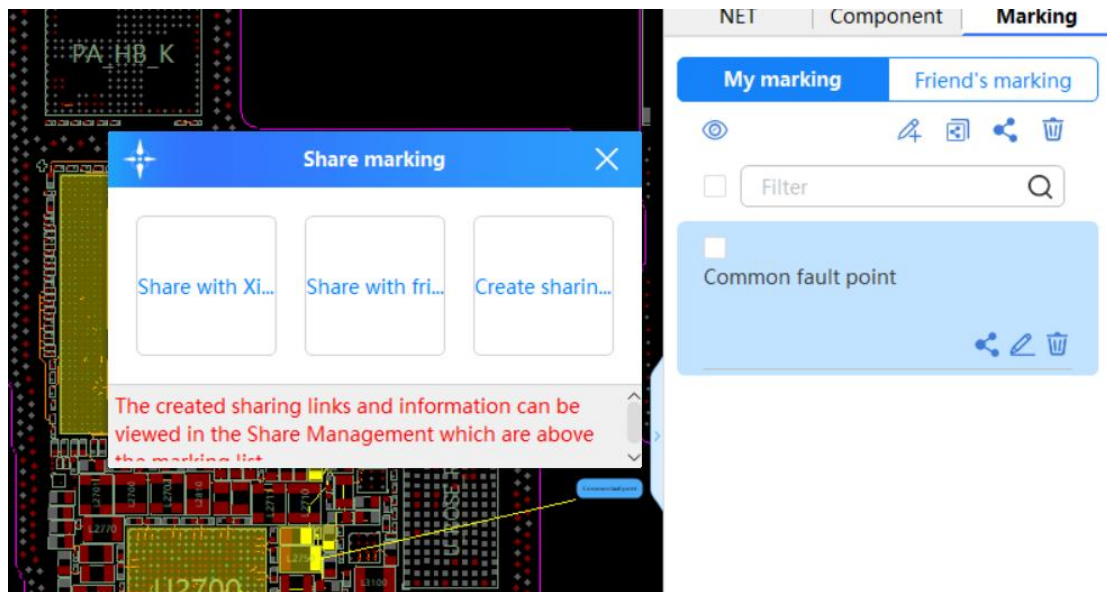
And you can pull out the side bar to manage marking.



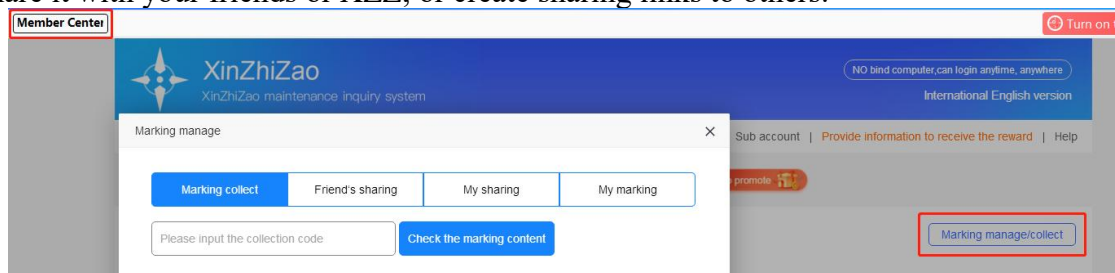
You can share, edit or delete individual marking, or manage all markings on the same model, or all Hide annotations.



Markings can be shared with regular friends or create a sharing link to post it in group so that others can receive by themselves.

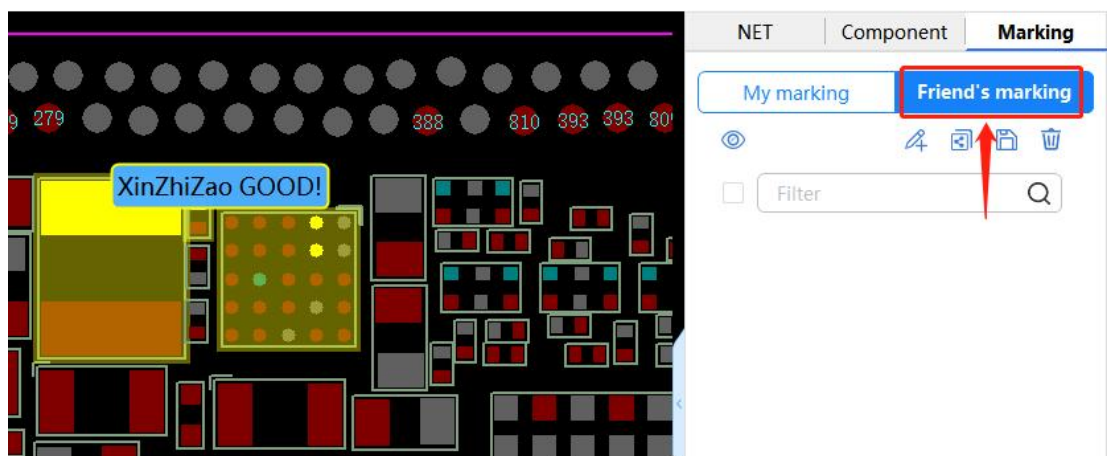


The Member Centre allows to collect and manage all markings, you can directly share it with your friends or XZZ, or create sharing links to others.



When friends share the markings, you can save it as your own if you think it is useful.

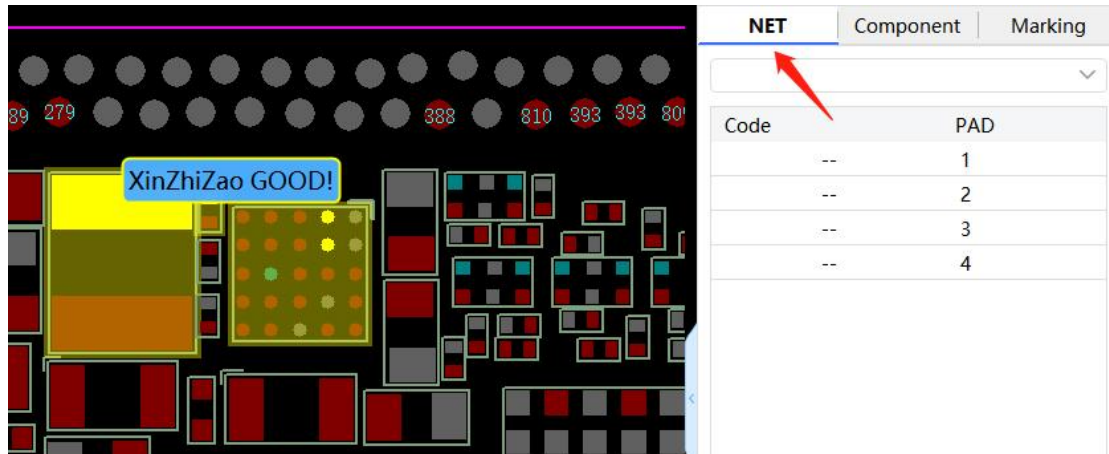
XinZhiZao receive many markings shared by our members, and after reviewing them, we will define them as "Xinzhizao". You no need to save these markings.





## 5.6 View all connection NET function

When pulling out the side bar, select “NET”, will be able to see how many PADs are currently connected to the signal.



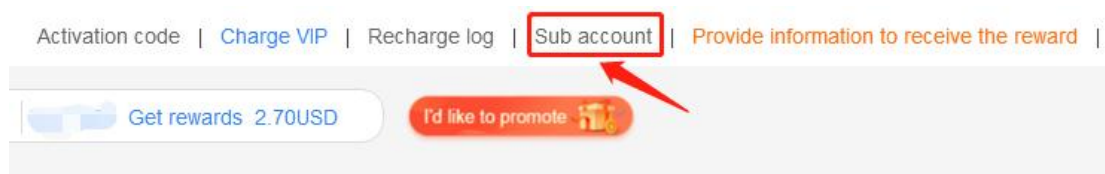
## 6. Three users account

XinZhiZao accounts are divided into one user account and three users account. No bound to the computer. One user account can be used on any computer, but it is not possible to login on two computers at the same time. Three users account can log in three arbitrary computers at the same time through the sub-account function. The sub-account management entry is on the top bar of the member center.

Sub-account usage scenes: The boss is the main account, after logging in, two sub-accounts are generated in the sub-account management for the staffs to use, so that three computers can log in at the same time.

The markings added by the main account and the sub-account are shared with each other by default, and there is no need to manually share them.

The name, password, and validity period of the sub-accounts are completely controlled by the boss.



When adding a sub-account, please refer to the picture below, pay attention to read the prompt message clearly.





**Sub-Account Management** Add Purchase now

Two sub-accounts can be added to the main account(disabled sub-accounts do not accumulate),  
Multi-account VIP expiry date: 2023-10-10 17:47:45

ID	Username	Status	Open time	Expiry time	Operation
----	----------	--------	-----------	-------------	-----------

Add User

test: 01

Sub Account UserName: test:01

Password

Please enter Password

Expire Date

2023-10-10 17:47:45

no more than: 2023-10-10 17:47:45

1 month

3 month

6 month

1 Year

Disable

☒ NO ☐ Yes

Cannot log in after selecting "Yes"

One main account can add two sub-accounts (banned sub-accounts are not counted, the total number should not exceed five), the username format of sub-account is [main account: sub-account], please pay attention when logging in!

**Sub-Account Management** Add Purchase now

Two sub-accounts can be added to the main account(disabled sub-accounts do not accumulate),  
Multi-account VIP expiry date: 2023-10-10 17:47:45

ID	Username	Status	Open time	Expiry time	Operation
294619	test:03	normal	2023-04-10 18:32:14	2023-05-10 18:31:43	<span>Edit</span>
294613	test:02	Disable	2023-04-10 17:58:57	2023-05-10 17:58:34	<span>Edit</span>
294612	test:01	normal	2023-04-10 17:58:40	2023-05-10 17:58:10	<span>Edit</span>



**XinZhiZao** V4.4  
Inquiry System for Intelligent Terminal  
Equipment Maintenance

Quick login here





☒ Save password [Recover?](#)

Login

 Software initialization has been completed, please log in!



## 7. Q&A

- ① This schematic program will access the server in the background during the running process, which will consume some of your network traffic and host resources, and it will not work if the network is disconnected. If you do not agree, please exit this schematic program immediately and delete it!
- ② This schematic program is safe for your computer. It will cache the files during operation to speed up the access speed. It will modify the files during the upgrade, which may cause false positives from antivirus software & security software. This situation is safe, please use it with confidence.
- ③ When cannot log in, please check whether there is a problem with the network, whether the software is the latest version (download the latest version <https://global.wmdang.com>), or the server is being upgraded and maintained.
- ④ When opening the BoardViewer file and an error message occurred:
  - 1). The BoardViewer file is non-PCB format, such as tvw format, need to open with the third-party software. This program has been integrated in the folder named BIN, which in the XinZhiZao installation directory.
  - 2). When opening BoardViewer and an error message occurred immediately, first of all, please confirm whether the computer is installed with .netframework. If the software can be opened but the BoardViewer opens with an error message, you can click Options-Graphics, select GDI, and drag it to the far right. The detailed tutorial, please refer to <https://www.chinafix.com/thread-1231576-1-1.html>.
- ⑤ Other questions, you can contact our XinZhiZao customer service for help, we will try to solve it.



WhatsApp